

customGadz

MimicsX2

Manual v1.3.0

USER MANUAL

Hybrid - iOS / Android



Note:

The Android operating device requires MHL/HDMI/SLIMPORT video streaming/mirroring capability in order to display video to an external monitor.

iOS devices require a AV/HDMI/VGA cable to display video externally.

** Its highly recommended that you use original video conversion cables and adapters.

** If using the MimicsX2 in a vehicle, you car might require an additional video converter.

Table of Contents

1. Overview
2. Quick start guide - Android
3. Quick start guide - iOS
4. MimicsX2 wiring diagram
5. Connecting MimicsX2 to an existing touchscreen system
6. Connecting MimicsX2 to a monitor that doesn't originally include a touchscreen
7. Updating The Firmware
8. Additional Information

Release Notes:

v1.0	- Initial Release	Feb-14-2013
v1.1	- Included detailed information for optional external home/back button	Feb-15-2013
v1.2	- Added video port definition for Nexus devices	
	- Eliminated the need for user to rely on external button for calibration and setup	
	- Greatly simplified device setup/calibration process	
	- Updated various descriptions relating specifically to the MimicsX2 Android application	
	- Separated quick start guide for iOS/Android	Dec-17-2013

1. Overview

The MimicsX2 is a device that allows an external touchscreen to control the operation of an Android/iOS device on a larger touchscreen display. This module uses a unique technique to achieve this without any modifications (root access or custom ROMs) of the Android device. However, iOS devices are required to be Jailbroken. When connected and configured, this system will allow you to access all your Android/iOS devices features and functions when connected to an external display such as an in-car display/monitor. Various touchscreen adapters are available to interface to different touchscreens.

For optimal operation the following applications/tweaks are required:

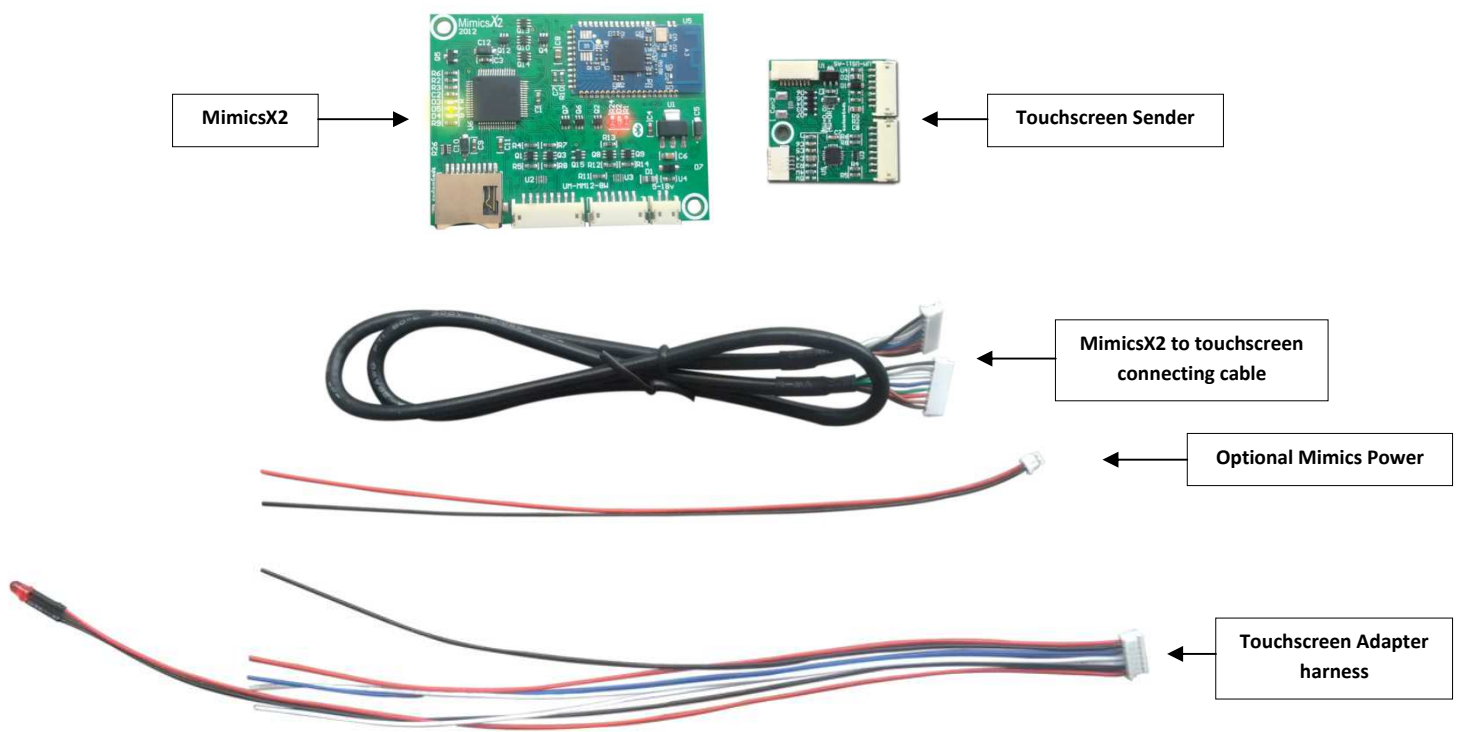
Android:

- Download the "MimicsX2: In Car Mode" application from the Goggle play store, this enables simple device calibration and setup and other key features

iOS

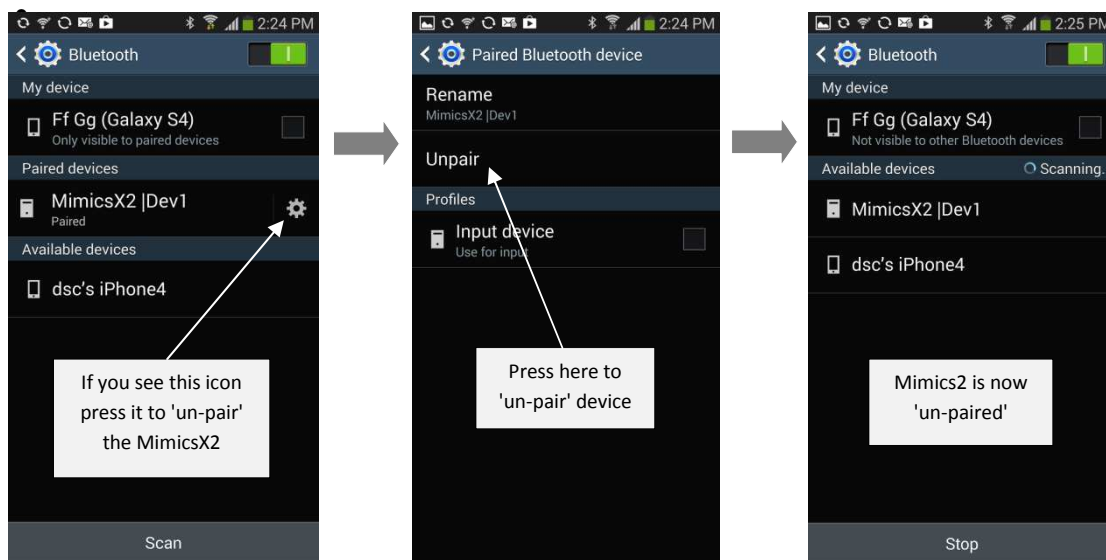
- MimicsX2 Driver - Software driver interface for MimicsX2 module
- SBRotator7 - Enables landscape springboard
- DisplayOut - Enables full HDMI mirroring to an external display with output scaling

Basic Kit components

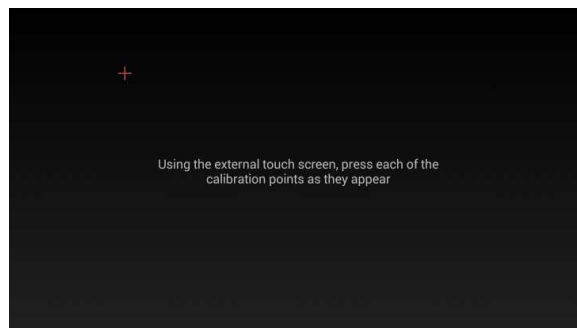


2. Quick start guide - Android

- Ensure you have the latest SDCard firmware installed. If not see "Section 7"
- Download the "MimicsX2: In Car Mode" application from the Google Play store
- Open up the application and you will see various settings. The options are self explanatory
- Plug in the MHL/HDMI or SLIMPORT cable into the phone and make sure you see your phone displayed on your external monitor.
- After you have connected and powered on the MimicsX2, you should see a flashing RED light. If you do not see this, press and hold anywhere on the external touchscreen until the RED light starts flashing (wait approx 10 seconds)
- Go into Settings > Bluetooth and make sure the MimicsX2 is "Un-paired" before attempting to connect it to a new Android device



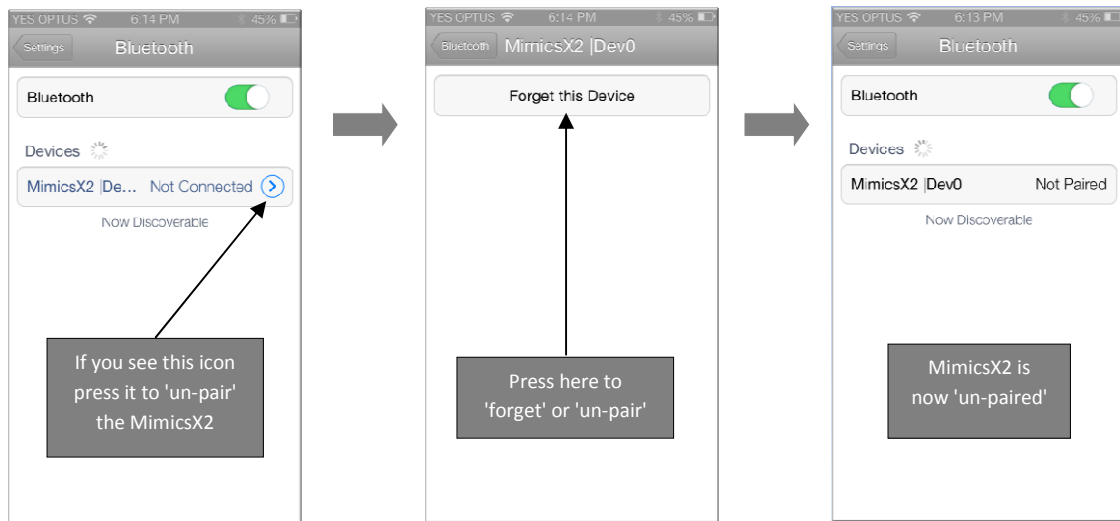
- Assuming that the RED light is still flashing, press on 'MimicsX2 |Dev1'. If you don't see this while the RED light is flashing simply press "SCAN" in the settings.
- When prompted for pin, press "0000". The MimicsX2 will automatically connect and you will be prompted with a calibration screen as follows



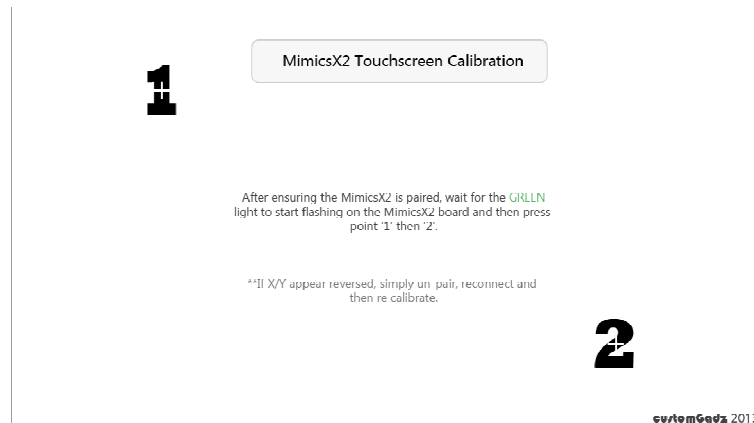
- Now simply press each of the calibration markers using your external touchscreen
- After you have completed calibrating the screen your Smartphone will be ready to control

3. Quick start guide - iOS

- Ensure you have the latest SDCard firmware installed. If not see "Section 7"
- Download the "MimicsX2 Driver" from Cydia
- After installing make sure you "Reboot" your device. Press and hold the power button to see an 'Slide to power off' then turn you phone of. Press the power button to restart.
- After you have connected and powered on the MimicsX2, you should see a flashing RED light. If you do not see this, press and hold anywhere on the external touchscreen until the RED light starts flashing (wait approx 10 seconds)
- Go into Settings > Bluetooth and make sure the MimicsX2 is "Un-paired" before attempting to connect it to a new iOS device



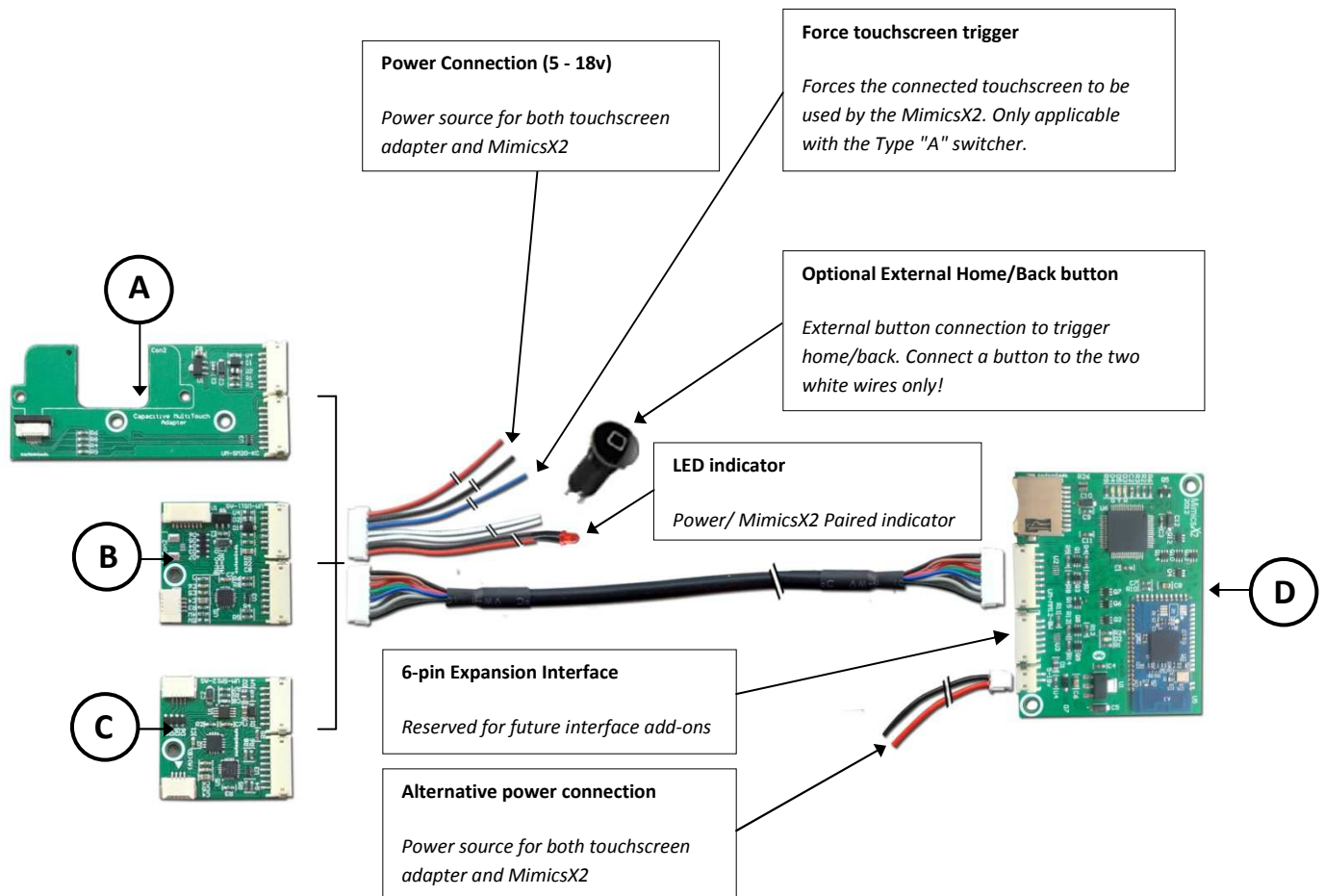
- Now with the MimicsX2 'un-paired', press on "MimicsX2 |Dev0" to connect and pair
- Press the 'HOME' button and open the 'MimicsX2' driver icon
- You will see the following screen pop up



- Ensure you can see a GREEN light flashing on the MimicsX2 board, then press point '1' & '2'
- After you have completed calibrating the screen your Smartphone will be ready to control
- If the X/Y axis appears swapped, simply un-pair the MimicsX2 and repeat the above process

- **4. MimicsX2 wiring diagram**

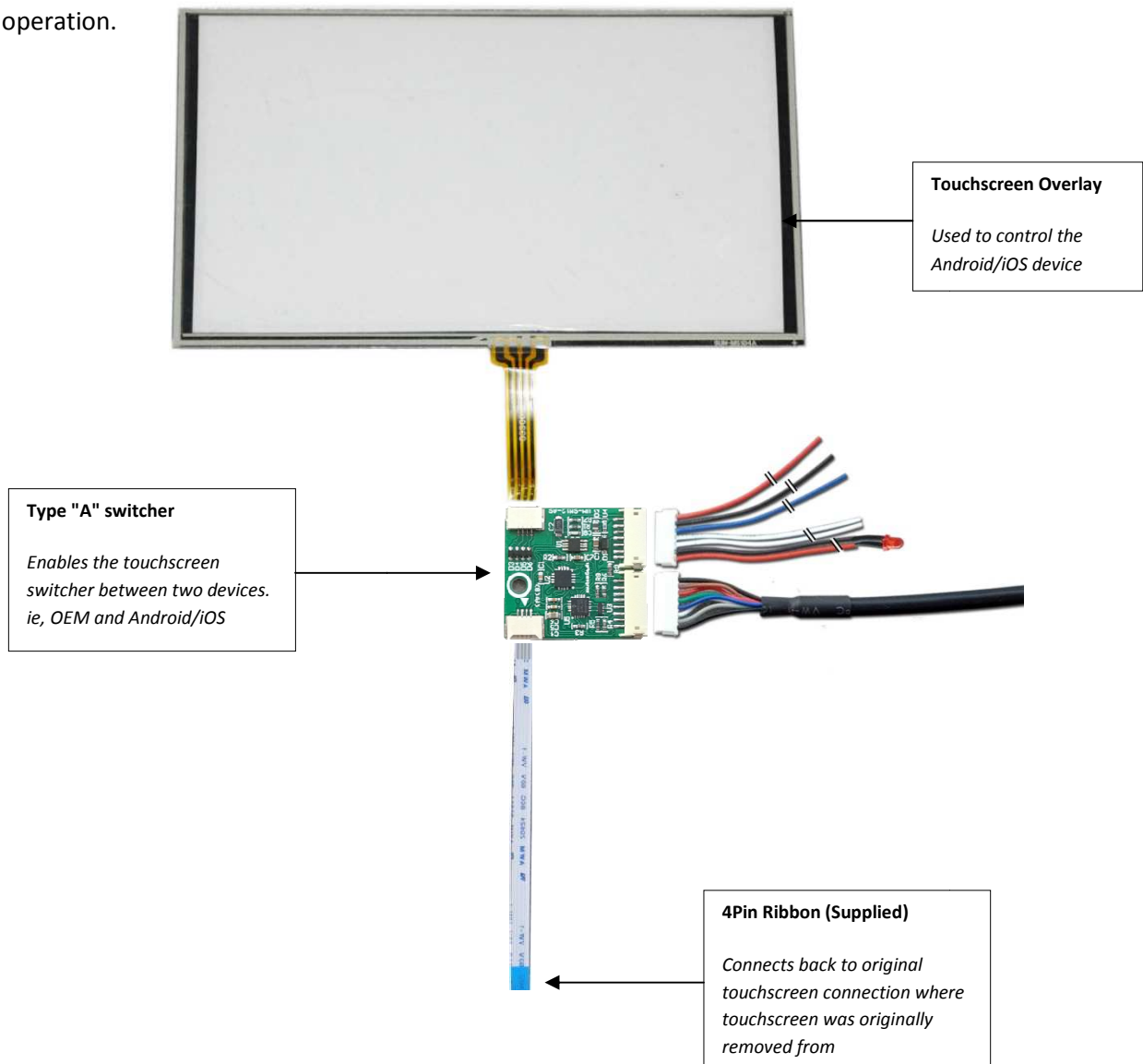
The following shows how the MimicsX2 is connected and powered.



- (A)** Capacitive touchscreen adapter - Specific for touchscreen in the MimicsX2 combo Kit.
- (B)** Universal Single touchscreen adapter - Can connect to most 4-wire touchscreens. 5-wire also available on special request.
- (C)** Type "A" Switcher - Used in dual systems where one touchscreen is to control two separate systems.
- (D)** MimicsX2 Module - Main Bluetooth module that communicates with the Smartphone and interfaces with various touchscreens.

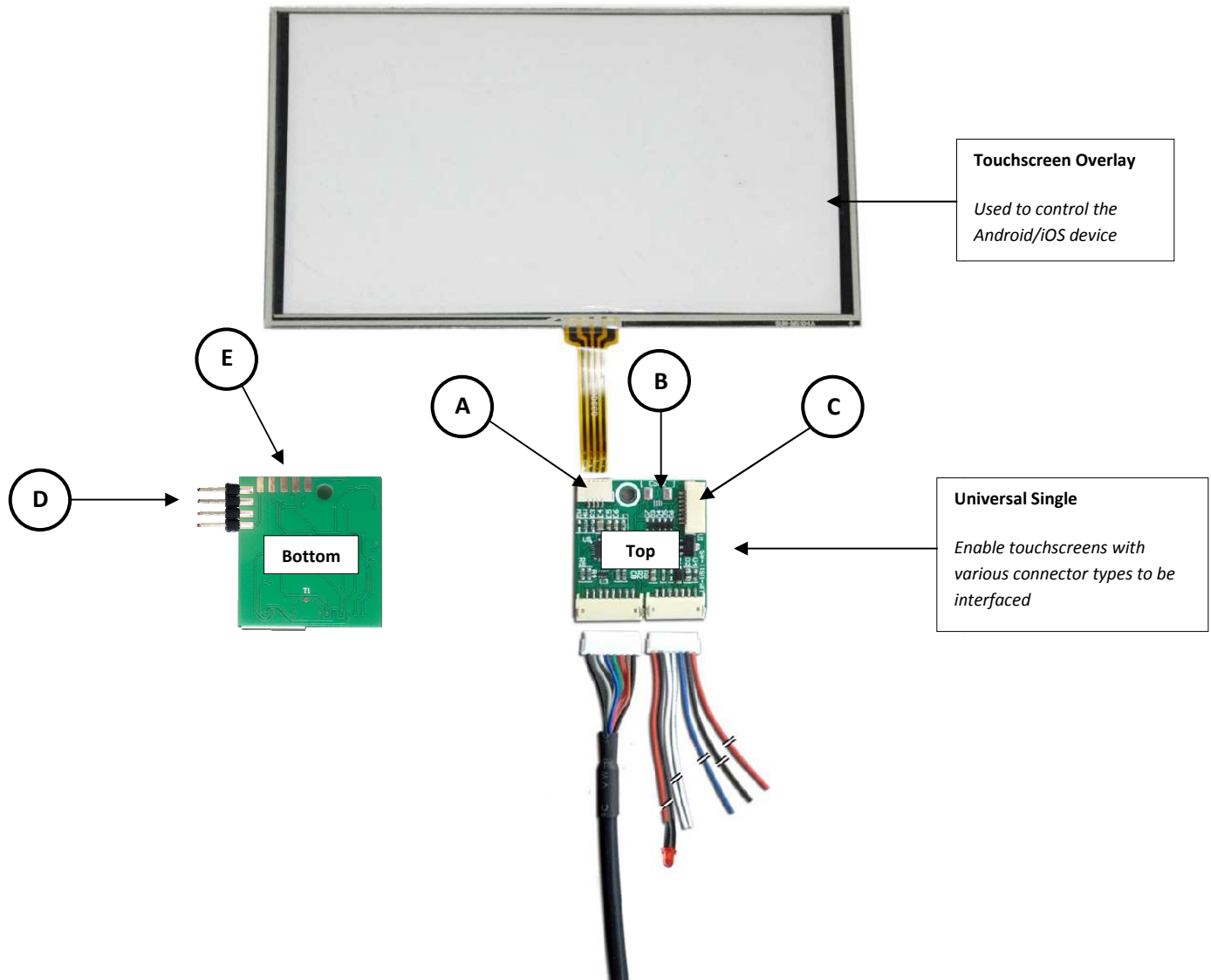
5. Connecting MimicsX2 to an existing touchscreen system

If you are connecting to a OEM system such as a headunit or OEM in dash monitor then use the following as a guide for connection. This setup allows you to "switch" between Smartphone and OEM operation.



6. Connecting MimicsX2 to an monitor that doesn't originally include a touchscreen.

If your system/vehicle has a in dash monitor but is not originally equipped with a touchscreen, it is possible to overlay a touchscreen and dedicate it to MimicsX2 operation.



- (A) 4-pin 1mm pitch ribbon connector.
- (B) 4-pin 0.5mm pitch ribbon connector for a certain touchscreen. Can be added on request.
- (C) 4-pin split to 8-pin 1mm pitch ribbon connector.
- (D) 4-pin 0.1" connector generally used on touchscreens greater than 8".
- (E) Optional 5 wire 0.1" touchscreen interface generally used on larger 19"+ touchscreens. This option is also available on request as a custom board modification is required.

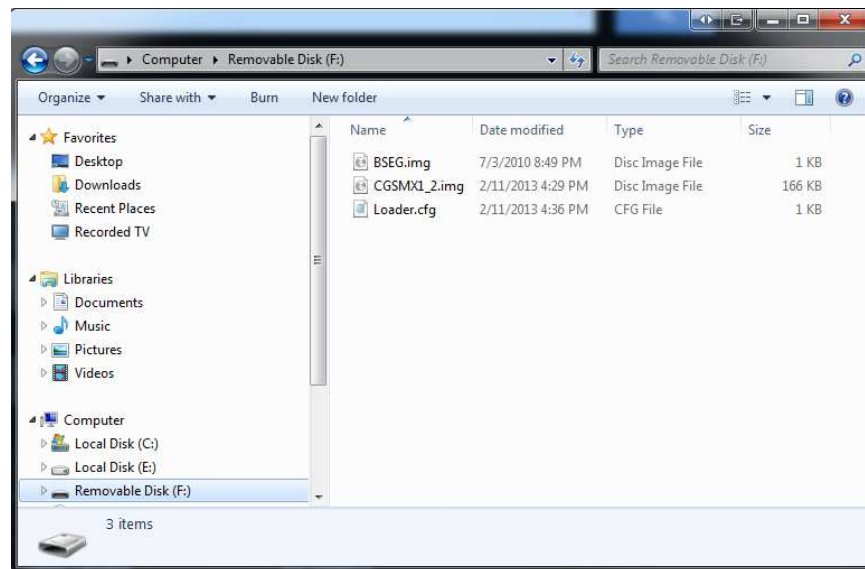
7. Updating The Firmware

Firmware updates allows easy and rapid turnaround low level changes to the core MimicsX2 operating system. The latest firmware update now allows on the fly changes without rebooting the MimicsX2.

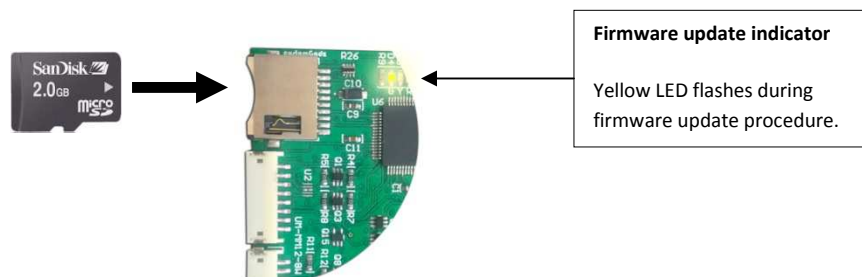
To upload new firmware.

- Download the latest firmware specific for your device/platform (zip file) from the customGadz website.
- Extract the contents of the .zip file and put all 3 files onto a MicroSD card (not supplied). You should see the following 3 files.

Firmware update files



- Inset the MicroSD card into the MimicsX2 main board and wait approximately 7 seconds to the new firmware to be updated. If you MimicsX2 does not auto update, simply turn MimicsX2 OFF then ON.



8. Additional Information

General

- Not many headunits or vehicles have a direct HDMI connection to allow your Android device to be directly connected to display video on your external monitor. In this case you will require a HDMI to A/V converter to interface the video to another screen.

Benefits

- With this system properly configured and setup, you will be able to easily control/view your mobile Smartphone on a larger easier to read display.

Audio/Phone calls

- The MimicsX2 can support multiply Bluetooth connections, ie MimicsX2 and a Bluetooth headset can be paired to the iOS/Android device simultaneously.
- Some older Smartphone's cannot reliably stream A2DP audio connection and run the mimicsX2 simultaneously.

Landscape/Portrait Apps

- Android - The MimicsX2 android application automatically force rotates and locks your device to landscape orientation.
- iOS devices - SBRotator is required to enable landscape mode for homescreen and various apps.

More info/technical support

Contact us at www.customGadz.com