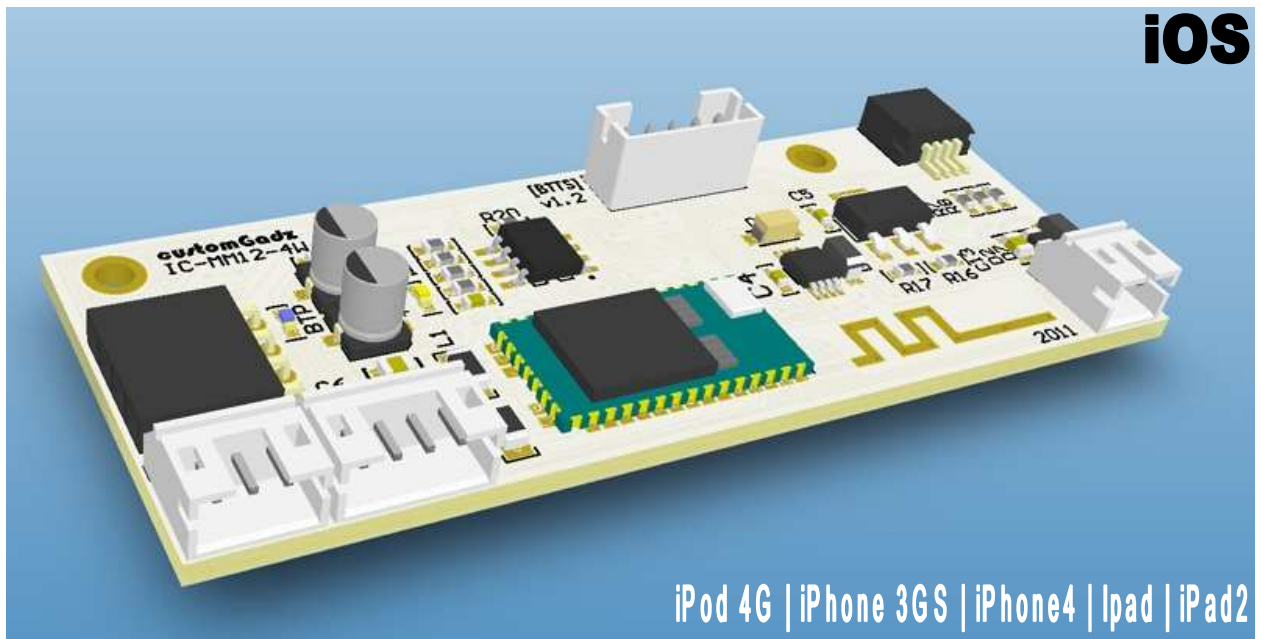


customGadz

mimics

# BASIC INTALLATION MANUAL



IC-MM12-4W

## Overview

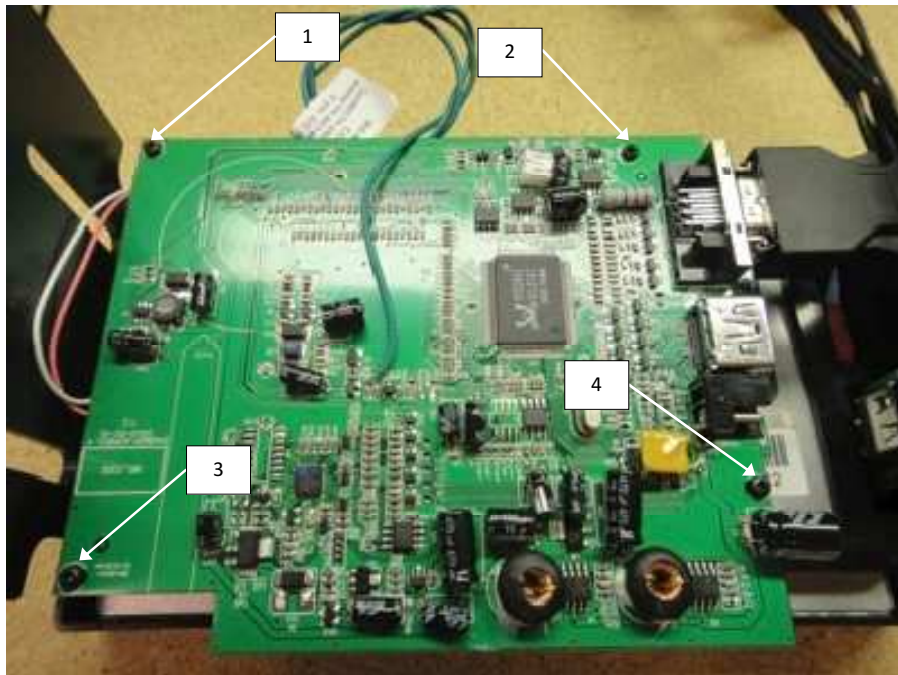
This manual provides basic information on how to connect the mimics to a external touchscreen monitor. The mounting kit was primarily designed to fit lilliput monitors such as the EBY701. Mounting can be adapted if using other types of monitors.

Basically to install the mimics, the 4-wire touchscreen connector needs to be unplugged from the original touchscreen controller (from monitor) and then plugged in to the mimics. Power then also need to be connected to the mimics. Mounting hardware is provided for easier installation.

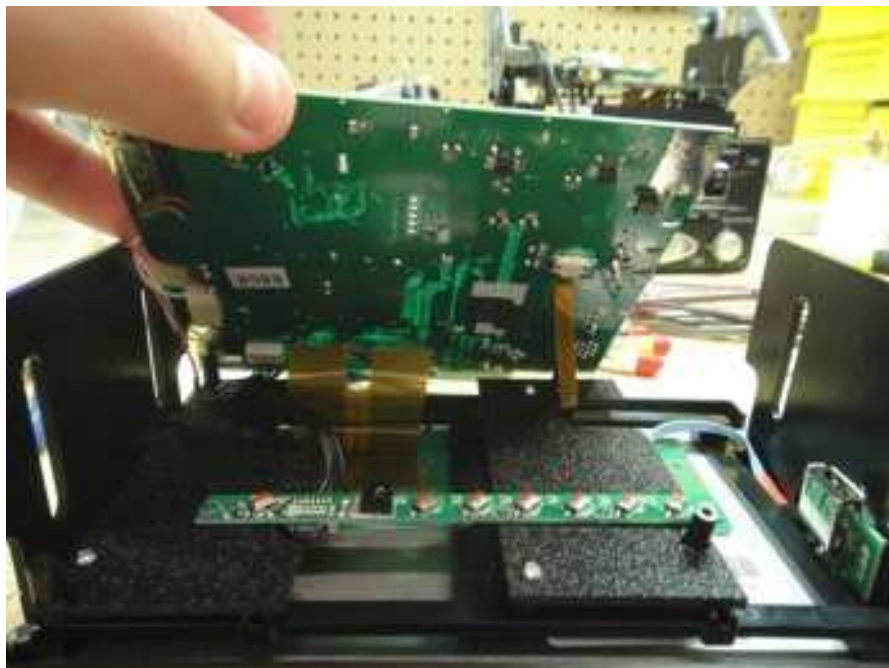
Since the mimics is a bluetooth device, only power and the 4-wire touchscreen cable is required for basic operation.

# Installation

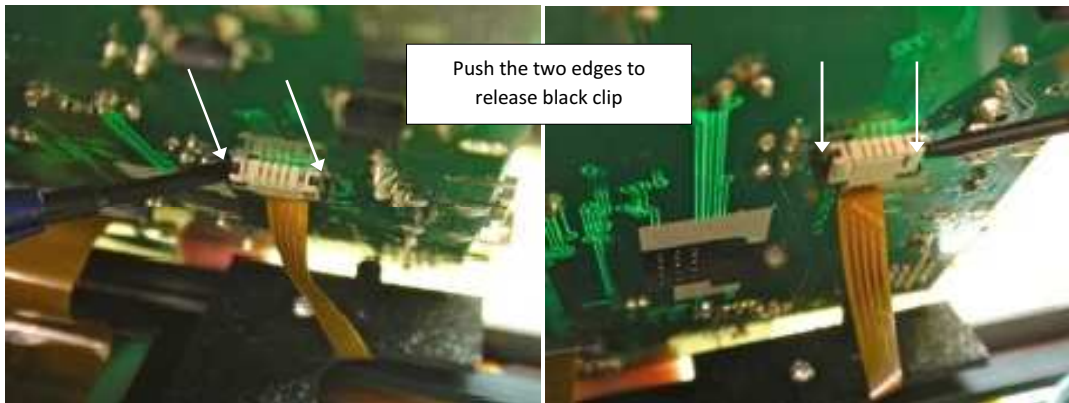
1. What we need to do is get to the 4-wire connector, so remove any screws holding the board so you can get to the underside of the board. In this case there are 4 screws.



2. Lift the controller board up gently with the button panel facing you



3. With a small flat head screw driver, push firmly on the black tabs on the left and right side of the 4 wire ribbon cable. They will push out, but not fall off the board.

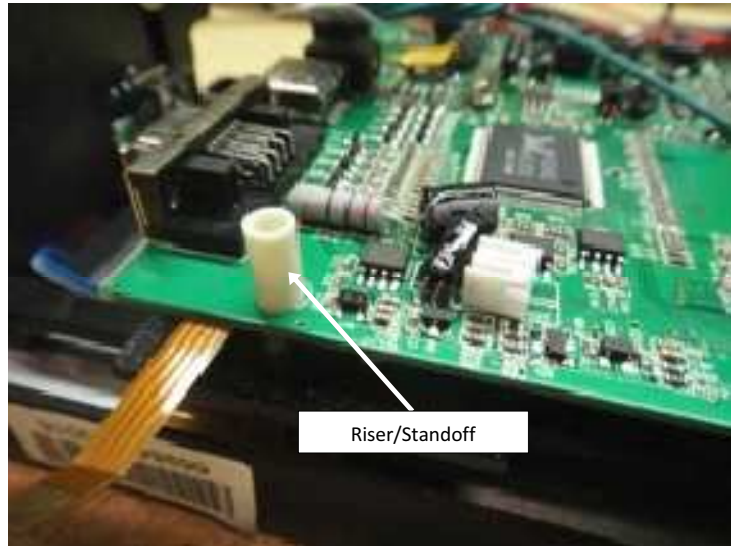


4. Once both sides are released, you should be able to gently pull the 4 wire cable out of the ribbon connector. Place the controller board back down, with the 4 wire ribbon sticking out. This cable will be plugged into the mimics module, and is used for the translation of the touch signals.

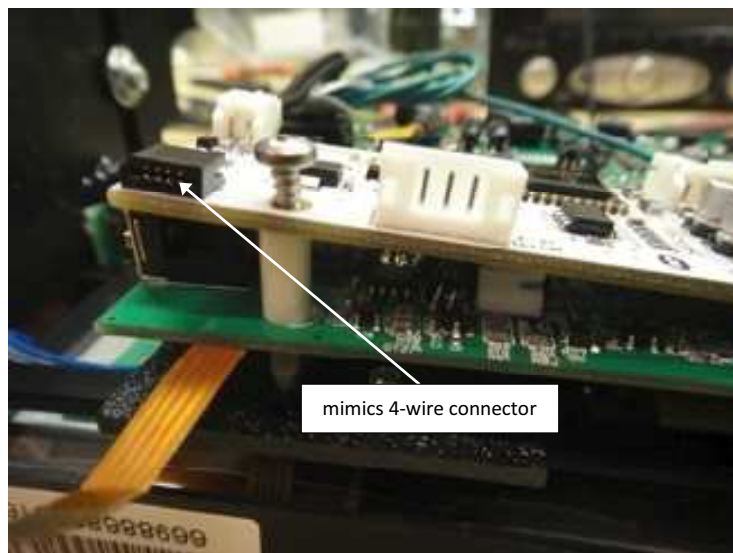


5. Screw the controller back in EXCEPT for the screw nearest to the ribbon cable.

6. Place one of the risers (standoff/spacer) on the hole. This elevates the board to prevent the mimics touching components on the driver board.



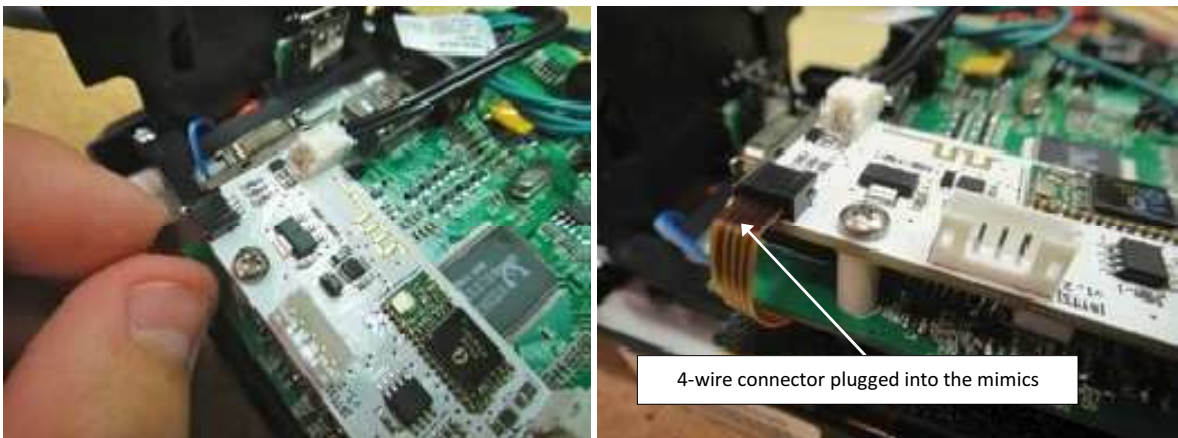
7. Place the screw into the mimics board and through the riser, on the lower life side with the black 4 pin connector facing your left and towards you.



8. While holding a pair of pliers around the nut to secure it in place. Use a small phillips head screw driver to screw in the one screw. At the same time, use your index finger to hold the mimics board straight as you screw.



9. With the mimics board now secure, gently plug in the 4 wire ribbon cable into the black connector. Place to fingers around the head of the ribbon in order to slide it in without breaking. DO NOT bend the cable.



\*\* Some monitors will be able to utilize two of the standoffs/spacers

10. Connect the barrel connector to the controller board, and then the white connector to the mimics



\*\* Another optional cable is provided for alternative power connection methods

11. Now you can safely power on the mimics and you should see a blue light illuminate, preceded by a flashing red light.

12. Plug in the 30-pin video cable (A/V, VGA, HDMI) into the iOS device (iPad, iPhone etc). After a few moments you will see the red light turn off (pairing successful) but the blue light will remain illuminated.

13. Now you can remotely control you iPhone with a larger external touchscreen monitor.